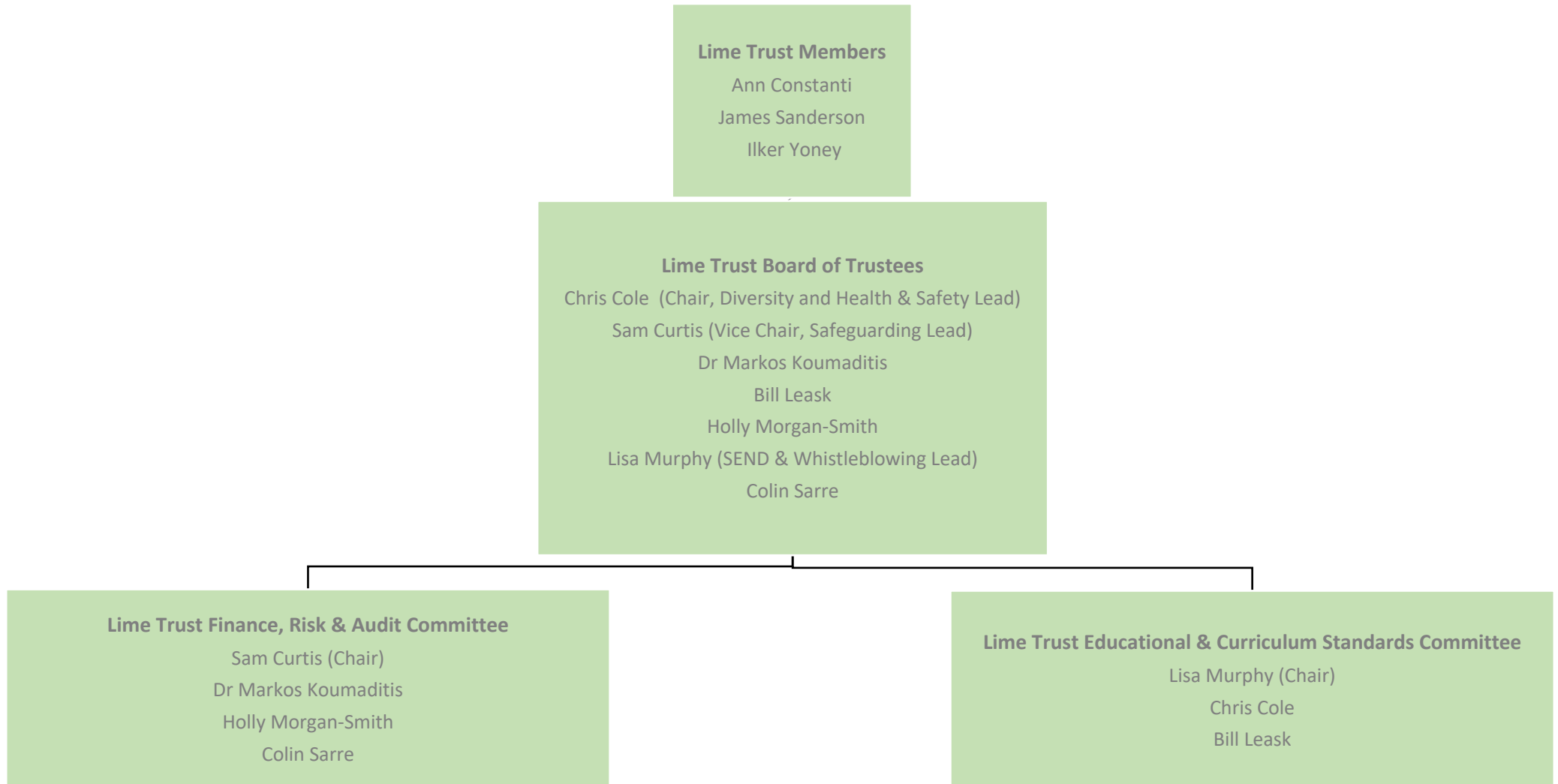


## Lime Trust Governance Members, Trustees and Committees



## Lime Trust Governance Academy Councils

### Lime Trust

#### Peterborough

#### Primary Academy Council

Scott Warren (Chair, Trust-appointed)  
 Edita Limonaviciene (Vice Chair, Watergall Parent)  
 Stephen Benn (Trust-appointed)  
 Ahmed Kamal (Trust-appointed)  
 Sophie Russell (Trust-appointed)  
 Rachael Holland (Trust Staff Rep)  
 Michelle Dunkley (Parnwell Staff Rep)  
 Hayley Nicholls (Abbotsmede Staff Rep)  
 Stuti Mishra (Abbotsmede Parent)  
 Terri Norman (Watergall Parent)

### Lime Trust

#### London

#### Special Academy Council

Anesta Philaretou (Chair, Ravensbourne Parent Rep)  
 Asim Mughal (Vice Chair, Hornbeam Parent Rep)  
 Shelley Eugene (Trust-appointed)  
 Stuart Marshall (Trust-appointed)  
 Minaar Hansi (Trust-appointed)  
 Ellen Martins-Olatunde (Trust-appointed)  
 Rachael Holland (Trust Staff Rep)  
 Gosia Klozek (Ravensbourne Staff Rep)  
 Gillian Walsh (Forest Approach Staff Rep)

### Lime Trust

#### London

#### Primary Academy Council (Larkswood)

Sharon Tate (Chair, Parent Rep)  
 Hannah Owen (Vice Chair, Trust-appointed)  
 Mumtaz Pandor (Trust-appointed)  
 Meghan Woodward (Trust-appointed)  
 Mike Thomas (Trust-appointed)  
 Baiju Naik (Parent Rep)  
 Nancy Dibley (Larkswood Staff Rep)  
 Rachael Holland (Trust Staff Rep)

### Lime Trust

#### Peterborough

#### Special Academy Council (Orton)

Sheralee Webb (Chair, Trust-appointed)  
 Toni Bailey (Trust-appointed)  
 Jessica Liddiard (Trust-appointed)  
 Dani Chesterman (Parent Rep)  
 Amanda Daoud (Trust-appointed)  
 Charlotte Whysall (Headteacher)  
 Rachael Holland (Trust Staff Rep)  
 Sam Houchen (School Staff Rep)  
 Karen Ross (School Staff Rep)